

# Kitchen PLANNER



## Kitchen Showroom Locations:

Ballston Spa 518.885.5311	Perth 518.883.9663
Queensbury 518.792.8601	Norwich 518.337.9322
Schuylerville 518.695.3242	Hamilton 315.824.2233
Hoosick 518.686.7391	Richmondville 518.519.2001
Granville 518.642.2855	Plattsburgh 518.561.2691
Warrensburg 518.623.3281	Ray Brook 518.891.2216
Delmar 518.439.9968	Burlington, VT 802.863.3428
East Greenbush 518.477.7503	

## We Also Have Store Locations In...

Schroon Lake 518.532.7404	Delhi 607.746.2386	Williston, VT 802.863.3428
Fort Plain 518.993.5755	New Berlin 607.847.6101	
Waterville 315.841.4111		

**CurtisLumber.com**



[facebook.com/curtislumber](https://facebook.com/curtislumber)



[instagram.com/curtislumberco](https://instagram.com/curtislumberco)



[houzz.com/pro/curtislumber18](https://houzz.com/pro/curtislumber18)



[youtube.com/curtislumbercompany](https://youtube.com/curtislumbercompany)

## **Kitchen planning isn't rocket science, But it does take some homework before you start.**

1. Get a general idea of how the space will be used.
2. Examine the traffic flow in and out of the space.
3. Make special note of architectural accents or barriers.
4. Design your kitchen or bath to be family-friendly.
5. Avoid hazards in design or cooking choices for small children.
6. Plan with electrical and water lines in mind.
7. Most of all, work within the space to achieve a pleasing mix of cabinets and open areas.

***With a little forethought, you can design the perfect kitchen for almost any size space!***

### **Getting Started**

#### **Determine the look you want to achieve.**

Whether it is Traditional or Contemporary or something in between, Curtis Lumber has more than enough style and color choices to please even the most discriminating tastes.

#### **Determine Your Budget**

National Kitchen and Bath Association typical budget for a kitchen remodel:

48% Cabinets

16% Labor

13% Countertops

8% Appliances

6% Interior Design

4% Plumbing

4% Flooring

1% Lighting

(source National Kitchen and Bath web site "Typical Budget Breakdown")

#### **Select a cabinet range and style to fit your budget and décor**

From economical stock cabinets to semi-custom and even a full-custom option, Curtis Lumber has cabinet styles and choices for every style and budget.

#### **Determine fixture and appliances**

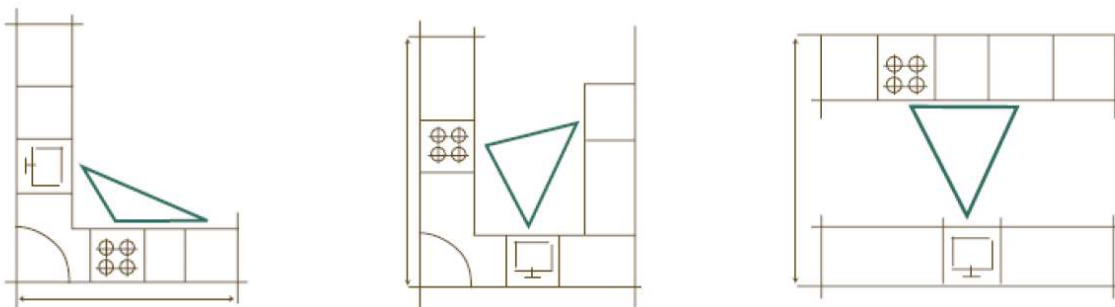
A wide range of kitchen appliances can be incorporated into the design as accents or to blend with the overall look using customized matching panels. Determine where and how you want your appliance and fixtures in your new space.

#### **For kitchens, select a work triangle and traffic flow**

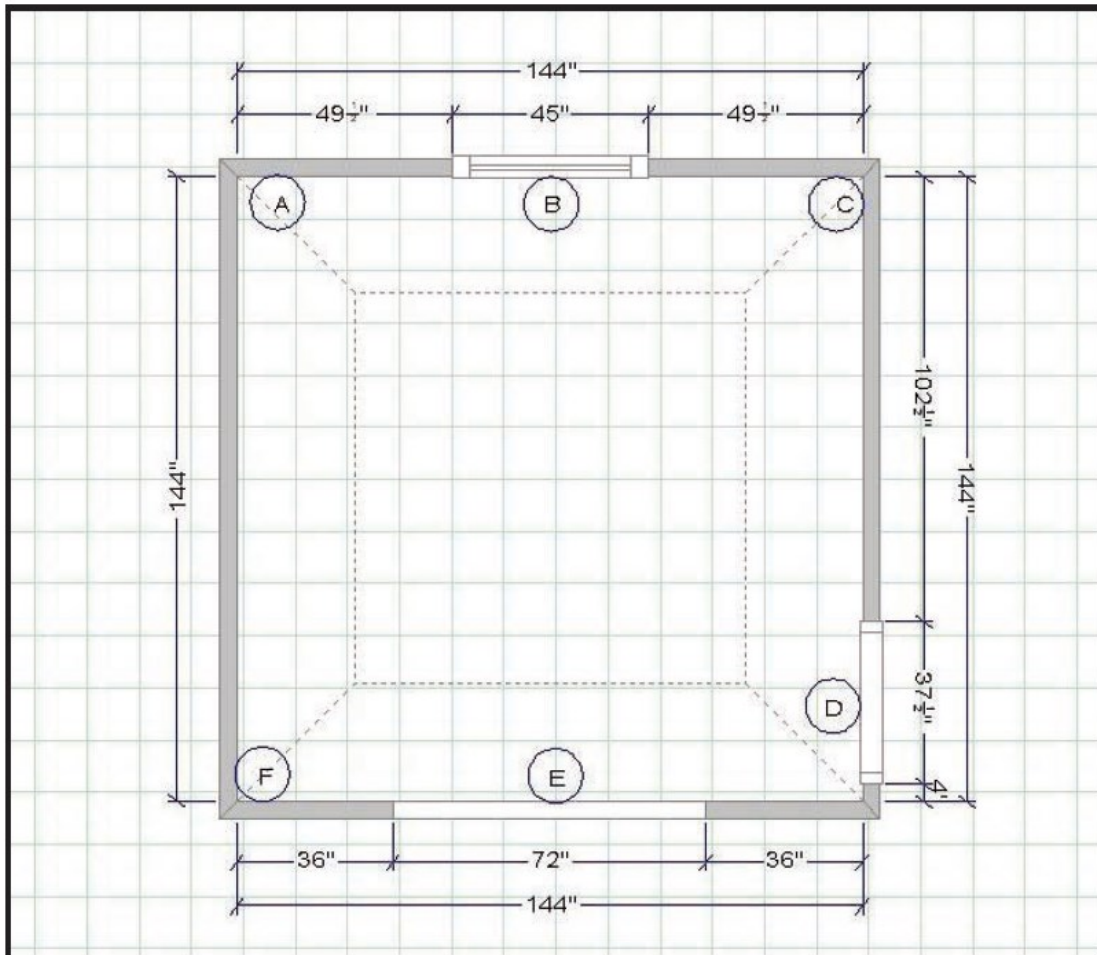
For the greatest efficiency, kitchen workspace is generally laid out in what kitchen designers call a "work triangle."

Examine these sample triangles and create a work triangle for your space.

- **No one length of the work triangle should be longer than 8' or 9'**
- **Your triangle's perimeter should be no longer than 26'**
- **The work triangle should not be in the middle of traffic flow**



# Kitchen Measuring Guide



Measuring your kitchen is easy. By following these simple instructions and using the graph paper provided you can help speed along the design process for your new kitchen.

Simply follow these instructions:

1. Start in one corner (A) and measure to the edge of the first door or window and mark down this measurement.
2. Measure the door or window (B) from one outside edge of the trim to the other outside edge.
3. Now, measure from the outside of the trim to the corner (C) or next door or window.
4. Repeat Step 1 through Step 3 until you have measured the entire room.

**Please Note:** Double check your measurements by measuring the entire wall length from wall to wall and comparing it to your individual measurements taken in Steps 1-3.

Example:

(A) to (C): Entire wall measures 144"

From (A) to (B) = 49-1/2". (B) = 45". (B) to (C) = 49-1/2"

Totals: 49-1/2" + 45" + 49-1/2" = 144"

#### Obstacles to note:

Ceiling Heights  
Appliance Dimensions  
Windows  
Alcoves  
Exterior Walls  
Soffits  
Doors  
Steps

#### Utilities to note:

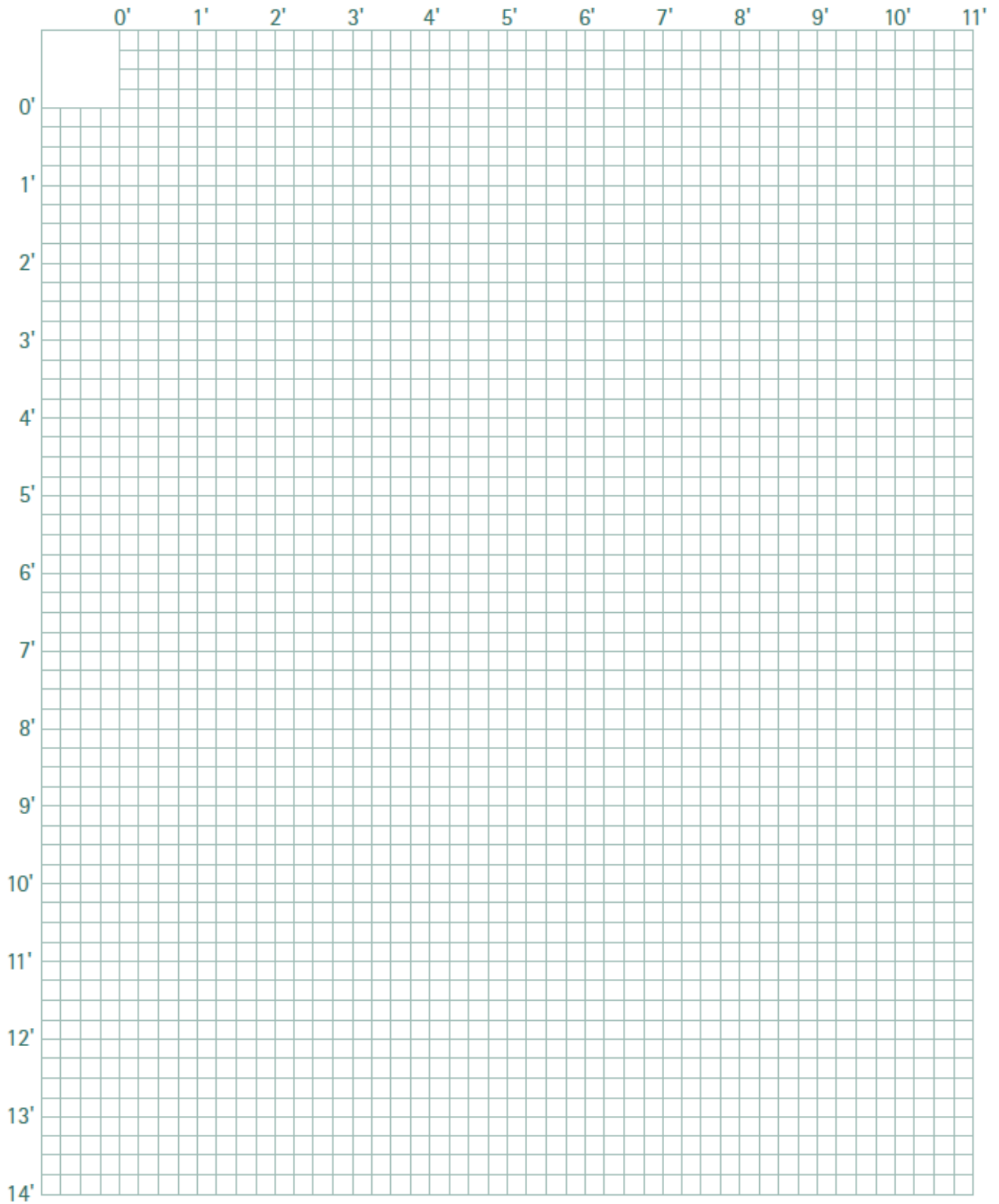
Receptacles  
Lights  
Water Lines  
Radiators  
Switches  
Gas Lines  
Heat Vents



**Ask Us For Help or Advice!**

Your Curtis Lumber specialist has the experience and professional training to help you plan and answer any questions you may have about kitchen design and installation.

# Kitchen Floorplan







## Kitchen Planning Checklist

Please fill out this planning sheet to the best of your ability in order to help you refine what you might want in your new kitchen. Our designers will walk you through the process in-person, however, this checklist will help you to think about what you might want. Bring this sheet to a showroom or to your first appointment with your designer.

Name: \_\_\_\_\_

Address: \_\_\_\_\_

City: \_\_\_\_\_ State: \_\_\_\_\_ Zip: \_\_\_\_\_

Home Phone: \_\_\_\_\_ Work Phone: \_\_\_\_\_ Cell: \_\_\_\_\_

Email: \_\_\_\_\_ Fax: \_\_\_\_\_

Jobsite Location: \_\_\_\_\_

---

### About Your Project

How did you hear about Kitchens at Curtis Lumber? \_\_\_\_\_

How long do you plan to live in the home you are renovating or building? \_\_\_\_\_

When was the house originally built? \_\_\_\_\_ Age of kitchen? \_\_\_\_\_

When would you like to begin the project? \_\_\_\_\_

Do you have a specific building or contractor with whom you'd like to work with? \_\_\_\_\_

If so, Name: \_\_\_\_\_ Phone: \_\_\_\_\_

What is the project budget range?

5-10K    10-20K    20-40K    40-60K    75-100K    100K+

Don't know



### Household & Lifestyle

Number of adults in household? \_\_\_\_\_ Teens? \_\_\_\_\_ Children? \_\_\_\_\_

Are you planning on a large family while in this house? \_\_\_\_\_

In what room do you usually eat meals? \_\_\_\_\_

Where would you like to eat after the kitchen project? \_\_\_\_\_

Do you need a table in the kitchen? \_\_\_\_\_ What size? \_\_\_\_\_

Do you entertain frequently? \_\_\_\_\_ Large or small gatherings? \_\_\_\_\_

What other activities will take place in the new kitchen? (check all that apply):

- Computer Center     Homework     Watching TV     Paying bills     Wet bar

How do you usually shop?

- Weekly     Buy in bulk     Before meal     Non-perishable in bulk

If you buy in bulk, do you need storage in the kitchen for all/most of the items? \_\_\_\_\_

---

### Cooking Style

Is the primary cook left or right handed? \_\_\_\_\_

How does the family use the kitchen for meal at home?

- "Take-out" meals     Baking     Gourmet     Specialty     Daily heat & serve meals
- Daily "from scratch" meals     Weekend family meals     Weekend "quantity" meals

Does the primary cook prefer to cook along or with help? \_\_\_\_\_



Will the family visit during the meal preparation? \_\_\_\_\_

Does the primary cook have any physical limitations? \_\_\_\_\_

Is there a secondary cook? \_\_\_\_\_

Do the primary and secondary cooks prepare meals together? \_\_\_\_\_

Will children be assisting with meal preparation? \_\_\_\_\_

---

### Design and Style

What colors/finishes are you considering for your new kitchen? \_\_\_\_\_

Is there a style you are considering? \_\_\_\_\_

Do you have a sketch, or collected pictures and ideas that you would like to include? \_\_\_\_\_

If the design could be greatly improved would you be will to make structural changes  
(move windows, doors, etc.? \_\_\_\_\_

What do you like about your current kitchen? \_\_\_\_\_

What do you dislike about your current kitchen? \_\_\_\_\_

Will you need a recycling center in your kitchen? \_\_\_\_\_

Will you be replacing your existing appliances? (check all you would like to include with sizes if available):

Dishwasher     Refrigerator     Oven/Range     Cook top     Microwave

Hood     Trash Compactor

Do you have any furniture that you want in your kitchen? \_\_\_\_\_

**Be sure to bring this completed questionnaire with any pictures of the existing kitchen that you may have  
to your appointment with your designer or on your initial visit.**

**It is not required, but will help facilitate the design process quickly and smoothly.**